



LCD Cart

HHC8P5



NON-POWERED

Mobile Technology Workstations

www.altus-inc.com



sales@altus-inc.com



LCD Cart

HHC8P5

Model Number

HHC8P5-YYYY (w/FSA-10)

Worksurface Dimensions

20"D x 21"W

Base Dimensions

18"W x 20"D

Weight

62 lbs.

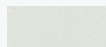


WORKSURFACE & ACCENT COLORS

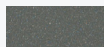
(YYYY = four digit part number).

Select from one of two worksurfaces:

Cloud or Shark Grey



Cloud
0141



Shark Grey
6005

LCD MONITOR SUPPORT (FSA-10)

Vesa standard 75mm/100mm with quick mount plate

Tilt Range: +10°/-20°

+/- 180° Swivel

5.5" of height adjustment

Integrated Cable Management

Weight limit 5 lbs. to 20 lbs.



BASE

Ascend height adjustable base

4"/100mm Rollerblade Casters

2 Locking / 2 non-locking

18"W x 20"D footprint



WORKSURFACE

5/8" Thick worksurface

3D laminate

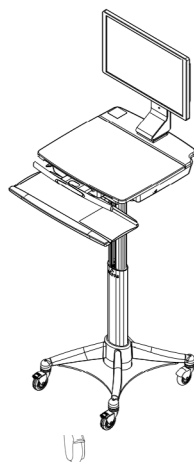
Friction/stay-open hinges keyed lock (HIPAA compliant)

Height adjustment hand lever

Technology storage area dimensions:

Upper Deck: 17.5"W x 13.75"D x 1.875"H

Lower Deck: 10.5"W x 10"D x 3.375"H



INCLUDED ACCESSORY

Keyboard Platform and Mousing (KBP)

One piece design

Left/right mousing area and cable management

Mousing area 6"H x 8"W

1/2" walls of keyboard platform to prevent keyboard and mouse from falling off

Intuitive 0/-20° tilting keyboard with 4" extending platform

Contoured wristrest



Non-Powered Cart Handle (HN)

Cast aluminum construction

18.44"W x .58"D x 1"H

MULTIPLE OPTIONS & ACCESSORIES

(See Spec Guide for full listing)



BCH-14
VESA Mounted
Adjustable Bar Code
Holder Platinum Finish



CPC-5-IW
Coiled Power Cord
Holder Hospital Grade -
3-Outlet Black Finish



HFH
Utility basket
platinum finish



HB
Utility Basket, Platinum
Finish

KEY ADJUSTABILITY FEATURES:

CWorksurface Height Adjustment Range: 233 3/8" - 49 3/8"

Monitor Support Height Adjustment Range:

9 1/4" - 14 3/4" (Measured from middle of VESA plate to base of monitor support)

5.5" Height Adjustment