



Locking LCD Cart

HHC6P5



NON-POWERED

Mobile Technology Workstations

www.altus-inc.com



sales@altus-inc.com



Locking LCD Cart HHC6P5

Model Number

HHC6P5-XX-YYYY

Worksurface Dimensions

20"D x 21"W

Base Dimensions

18"W x 20"D

Weight

64 lbs.



LCD Monitor Support - FSA-10

Vesa standard 75mm/100mm with quick mount plate

Tilt Range: +10°/-20°

+/- 180° Swivel

5.5" of height adjustment

Integrated Cable Management

Weight limit 5 lbs. to 20 lbs.



INCLUDED ACCESSORY

Swing-a-mouse (SAM-3)

8"W x 9"D



Cory Tray (CT)

16.25"W x 5.25"D x 6"H

Counterweight (CW)

13.25"W x 14"D x .25"H



BASE

Ascend height adjustable base

4"/100mm Rollerblade Casters

2 Locking / 2 non-locking

18"W x 20"D footprint



WORKSURFACE

Dual surface 1" thick worksurface

Upper and lower surface: reversed teardrop edge



Interior technology storage area dimensions:
18.25"W x 11"D x 2.75"H

#D laminate

Integrated black vinyl palm support

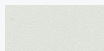
Height adjustment hand level

WORKSURFACE & ACCENT COLORS

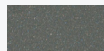
(YYYY = four digit part number).

Select from one of two worksurface colors:

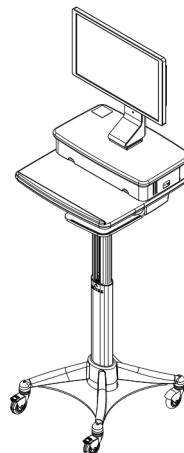
Cloud or Shark Grey



Cloud
0141



Shark Grey
6005



MULTIPLE OPTIONS & ACCESSORIES

(See Spec Guide for full listing)



BCH-14
VESA Mounted
Adjustable Bar Code
Holder Platinum Finish



CPC-8
Coiled Power Cord
Holder Hospital Grade -
3-Outlet Black Finish



HFH
Utility basket
platinum finish



HB
Utility Basket, Platinum
Finish

KEY ADJUSTABILITY FEATURES:

CWorksurface Height Adjustment Range: 28.5" - 46.5"

Monitor Support Height Adjustment Range:

9 1/4" - 14 3/4" (Measured from middle of VESA plate to base of monitor support)

5.5" Height Adjustment