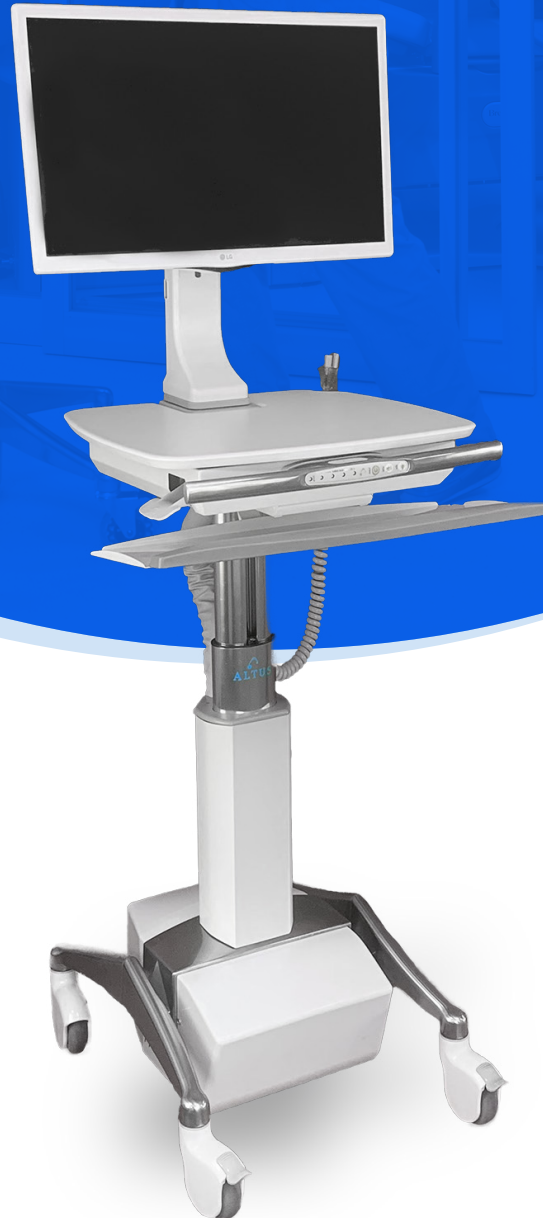




# ClioAir

## LCD and All-in-One PC Cart

### EL3



**POWERED**

Mobile Technology Workstations

[www.altus-inc.com](http://www.altus-inc.com)

**clio**air

[sales@altus-inc.com](mailto:sales@altus-inc.com)



# ClioAir

LCD and All-in-One PC Cart  
EL3

## Model Number

EL3-YYYY-Z

## Worksurface Dimensions

17"D x 20"W

## Base Dimensions

18.5"W x 21.5"D

## Weight

90 lbs.



## BASE

Ascend EL height adjustable base  
Integrated cable management  
45 Ah LiFePO4 battery system



## CHOOSE THE RIGHT CASTERS FOR YOUR APPLICATION:

### CHOICE 1: EL3-YYYY-1

Perfect choice for maximum mobility  
4"/100mm shrouded casters  
2 locking / 2 non-locking



### CHOICE 2: EL3-YYYY-2

Perfect choice for floor-to-floor and traversing elevator thresholds  
4"/100mm dual wheelcasters  
2 locking / 2 non-locking



## WORKSURFACE

5/8" 3D worksurface  
Hinge with kickstand  
Keyed lock (HIPAA Compliant)  
Handle with battery interface  
Coiled power cord with cord hook (6' extended, 3' resting)  
Up/Down electronic lift button  
Technology Area Dimensions: 12.25"W x 10.75"D x 2.375"H



## INCLUDED ACCESSORY

### Height Adjustable LCD Monitor Support (FSA-10)

Vesa standard 75mm/100mm with quick mount plate  
Tilt range: -20°/+10°, +/- 180 degrees front/back rotation

### 5.5" height adjustment

Integrated cable management

Weight limit 5 lbs. to 20 lbs.

### Keyboard Platform and Mousing (KBP)

One piece design

Left/right mousing area and cable management

Mousing area: 6"H x 8"W

Dimensions: 23"W x 7.5"D

1/2" walls of keyboard platform to prevent keyboard and mouse from falling off

Intuitive 0 /-20 degrees tilting keyboard with platform that extends 5.62"

Contoured wrist rest and breakaway hinge

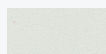


## WORKSURFACE & ACCENT COLORS

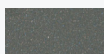
(YYYY = four digit part number).

Select one of two worksurface colors:

**Cloud, Shark Grey**



Cloud  
0141



Shark Grey  
6005

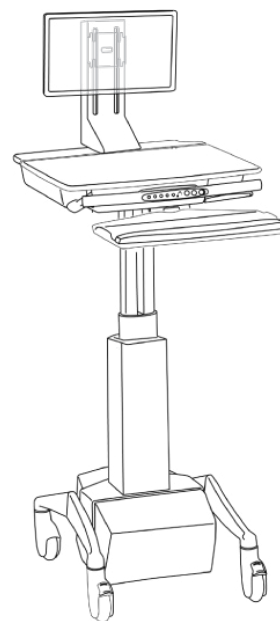
## KEY ADJUSTABILITY FEATURES:

**Worksurface Height Adjustment Range:** 34.72" - 49.96"

**Keyboard Height Adjustment Range:** 29.27" - 44.27"

**Monitor Support Height Adjustment Range:**

9 3/4" - 15 1/4" (5.5" Height Adjustment)



3731 Northridge Drive NW, Suite 1, Walker, MI 49544  
PH 888.537.1311 | www.altus-inc.com

# clio<sub>air</sub> ClioAir LCD and All-in-One PC Cart - EL3

## MULTIPLE OPTIONS & ACCESSORIES

(See Spec Guide for full listing)



PT-HB-PL  
Utility basket,  
platinum finish



PT-HFH  
Utility basket,  
platinum finish



PT-MPS-6-PL  
Multi-purpose adjustable  
shelf, platinum finish



PT-DS1  
Column mounted  
single drawer, white  
finish



PT-DS2  
Column mounted  
double drawer,  
white finish



BCHPS3  
Dual side shelf

## FEATURES



Power System  
Enclosure



Vinyl Sleeve and  
Polished Aluminum  
Extrusion



Keyboard LED Light



Coiled Power  
Cord Holder