

SPEC SHEET ← Labor & Del. 214 - 225 Med Surg L2 ↑
← Nurseries Post Partum 226 - 233 ↑



Clio LCD Cart

E3



POWERED

Mobile Technology Workstations

www.altus-inc.com



sales@altus-inc.com

Model Number	Worksurface Dimensions	Base Dimensions	Weight
E3-YYYY-Z	20"D x 21"W	18.5"W x 21.5"D	104 lbs.



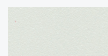
WORKSURFACE & ACCENT COLORS

(YYYY = four digit part number).

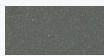
Select worksurface color (1 standard color). If another worksurface color is preferred, select alternative (1 choice).

Standard Color: Cloud

Alternative Color: Shark Grey



Cloud
0141



Shark Grey
6005

BASE

Ascend EL height adjustable base
Integrated cable management
45 Ah LiFePO4 battery system



INCLUDED ACCESSORY

Height Adjustable LCD Monitor Support (FSA-10)

Vesa standard 75mm/100mm with quick mount plate



Tilt range: -20°/+10°, +/- 180 degrees front/back rotation

5.5" height adjustment

Integrated cable management

Weight limit 5 lbs. to 20 lbs.



CHOOSE THE RIGHT CASTERS FOR YOUR APPLICATION:

CHOICE 1: E3-YYYY-1

Perfect choice for maximum mobility

4"/100mm shrouded casters

2 Locking / 2 non-locking



CHOICE 2: E3-YYYY-2

Perfect choice for floor-to floor and traversing elevator thresholds

4"/100mm dual wheel casters

2 Locking / 2 non-locking



WORKSURFACE

5/8" 3D laminate

Friction/stay-open hinges

Keyed lock (HIPAA compliant)

Coiled power cord with cord hook (6' extended, 3' resting)

Equipped with LED keyboard light

Up/Down electronic lift button

Technology Area Dimensions:

Upper Deck: 17.5"W x 13.75"D x 1.875"H

Lower Deck: 10.5"W x 10"D x 3.375"H



Keyboard Platform and Mousing (KBP)

One piece design

Left/right mousing area and cable management

Mousing area: 6"H x 8"W

Dimensions: 23"W x 7.5"D

1/2" walls of keyboard platform to prevent keyboard and mouse from falling off

Intuitive 0 /-20 degrees tilting keyboard with platform that extends 4"

Contoured wrist rest and breakaway hinge

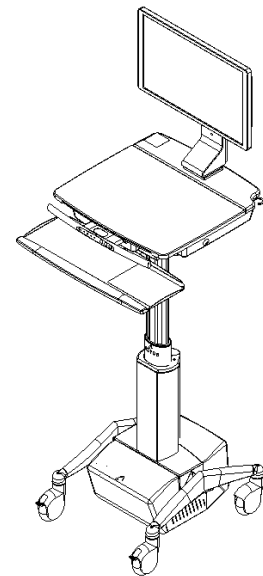
KEY ADJUSTABILITY FEATURES:

Worksurface Height Adjustment Range: 34 1/4" - 50"

Keyboard Height Adjustment Range: 28" - 43 3/4"

Monitor Support Height Adjustment: 9 1/4" - 14 3/4"

(5.5" of Height Adjustment)



MULTIPLE OPTIONS & ACCESSORIES

(See Spec Guide for full listing)



PT-HB-PL
Utility basket,
platinum finish



PT-HFH
Utility basket,
platinum finish



PT-MPS-6-PL
Multi-purpose adjustable
shelf, platinum finish



DSW
Worksurface mounted
single drawer, built in
lock, white finish



PT-DS2
Column mounted double
drawer, white finish



BCH-14
VESA mounted adjustable
bar code holder, platinum
finish

KNOWING YOUR POWERED SYSTEM



**Power System
Enclosure**



**Vinyl Sleeve and
Polished Aluminum
Extrusion**



Keyboard LED Light



**Coiled Power
Cord Holder**