



# Locking Laptop Cart

CLP



**NON-POWERED**

Mobile Technology Workstations

[www.altus-inc.com](http://www.altus-inc.com)



[sales@altus-inc.com](mailto:sales@altus-inc.com)



# Locking Laptop Cart

CLP

## Model Number

CLP-YYYY

## Worksurface Dimensions

20"D x 21"W

## Base Dimensions

18"W x 20"D

## Weight

54 lbs.



### BASE

Ascend height adjustable base

#### 4"/100mm Rollerblade Casters

2 Locking / 2 non-locking

18"W x 20"D footprint



### WORKSURFACE

5/8" Thick worksurface

3D laminate

Height adjustment hand lever

Friction/stay-open hinges

Keyed lock (HIPAA compliant)

Technology storage area dimensions:

Main deck: 17 1/2"W x 13 1/4"D x 1 7/8"H

Lower deck: 10 1/2"W x 10"D x 3 3/8"H



### INCLUDED ACCESSORY

#### Keyboard Platform and Mousing (KBP)

One piece design

Left/right mousing area and cable management

Mousing area 6"H x 8"W

1/2" walls of keyboard platform to prevent keyboard and mouse from falling off

Intuitive 0/-20° tilting keyboard with 4" extending platform

Contoured wristrest

Breakaway hinge

#### Non-Powered Cart Handle (HN)

Cast aluminum construction

18.44"W x .58"D x 1"H



### MULTIPLE OPTIONS & ACCESSORIES

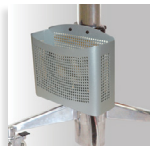
(See Spec Guide for full listing)



BCH-18  
Aluminum bar code  
holder, white finish



CPC-5  
Coiled Power Cord  
Holder Hospital Grade -  
3-Outlet Black Finish



HFH  
Utility basket  
platinum finish



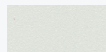
HB  
Utility Basket, Platinum  
Finish

### WORKSURFACE & ACCENT COLORS

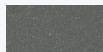
(YYYY = four digit part number).

Select from one of two worksurfaces:

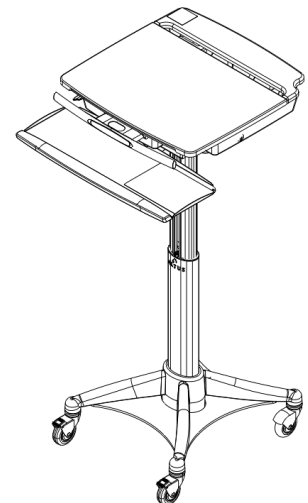
**Cloud or Shark Grey**



Cloud  
0141



Shark Grey  
6005



### KEY ADJUSTABILITY FEATURES:

**Cart Height Adjustment Range:** 31 3/8" - 49 3/8"

**Keyboard Adjustment Range:** 28 1/2" - 46 1/2"